



On average,
New Life Village is home to:

120
Children

42
Caregivers

10
Seniors



We meet our residents
at the crossroads of the



Foster
Care

&



Affordable
Housing

&

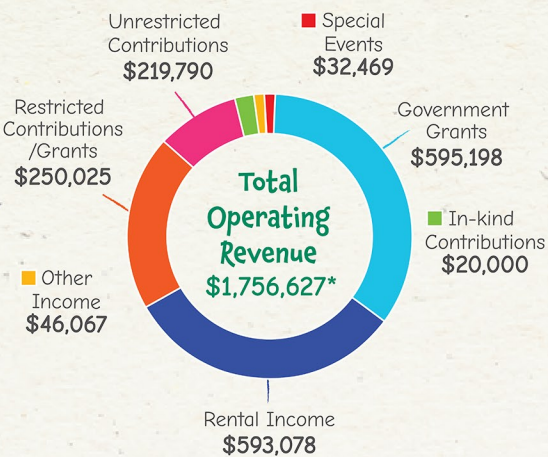
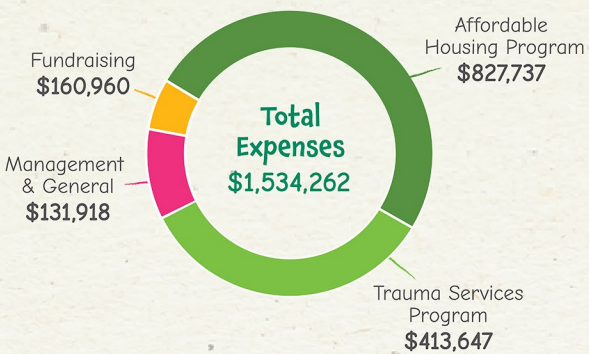


Vital
Aging

...crises affecting
Hillsborough County

2023 - 2024 Financials

81 cents of every \$1 received
funds Programs & Services



Standard/Guideline	Benchmark	2023	2024
% of funds spent to administer program activities	>65%	87%	81%
% of funds spent to administer agency	≤15%	11%	8%
Cost to generate \$1 of charitable contributions	<\$0.20	\$0.07	\$0.33
Cash reserves	3-6 months	2 months*	1.27 months
Agency's reliance on governmental funding	33%	18%	34%

*Includes restricted contributions to Capital Campaign.

**New construction in 2022 reduced reserves. Plan in place to rebuild reserves. Agency has line of credit if needed.

**Government funded capital project.

*Based on BBB Wise Giving Alliance Standards for Charitable Accountability